



Insulated Terminals Teflon,* Unassembled

*Teflon is a registered trademark of Dupont

Double Turret/Both Sides Refer to Figure 4442

Unassembled Teflon*

Part No.	Board Thick	Mounting Hole Dia. ^{+0.003} / _{-0.001}	X	Y	Z	Swage Tool	DWV
4442A	.031	.142	.081	.116	.312	4442	2000
4442B	.062	.142	.081	.116	.312	4442	2000
4442C	.094	.142	.081	.116	.312	4442	2000
4442D	.125	.142	.081	.116	.312	4442	2000

Refer to Figure 4472

Part No.	Board Thick	Mounting Hole Dia. ^{+0.003} / _{-0.001}	X	Y	Z	Swage Tool	DWV
4472A	.031	.154	.081	.116	.312	4472	2700
4472B	.062	.154	.081	.116	.312	4472	2700
4472C	.094	.154	.081	.116	.312	4472	2700

Refer to Figure 4449

Part No.	Board Thick	Mounting Hole Dia. ^{+0.003} / _{-0.001}	X	Y	Z	Swage Tool	DWV
4449A	.031	.188	.081	.117	.400	4449	2300
4449B	.062	.188	.081	.117	.400	4449	2300
4449C	.094	.188	.081	.117	.400	4449	2300

Double Turret/Single Turret Refer to Figure 4441

Part No.	Board Thick	Mounting Hole Dia. ^{+0.003} / _{-0.001}	X	Y	Z	Swage Tool	DWV
4441A	.031	.142	.081	.116	.312	4441	2000
4441B	.062	.142	.081	.116	.312	4441	2000
4441C	.094	.142	.081	.116	.312	4441	2000
4441D	.125	.142	.081	.116	.312	4441	2000

Refer to Figure 4471

Part No.	Board Thick	Mounting Hole Dia. ^{+0.003} / _{-0.001}	X	Y	Z	Swage Tool	DWV
4471A	.031	.154	.081	.116	.312	4471	2700
4471B	.062	.154	.081	.116	.312	4471	2700
4471C	.094	.154	.081	.116	.312	4471	2700
4471D	.125	.154	.081	.116	.312	4471	2700

Refer to Figure 4448

Part No.	Board Thick	Mounting Hole Dia. ^{+0.003} / _{-0.001}	X	Y	Z	Swage Tool	DWV
4448A	.031	.188	.081	.117	.400	4448	2300
4448B	.062	.188	.081	.117	.400	4448	2300
4448C	.094	.188	.081	.117	.400	4448	2300

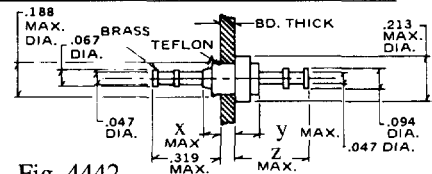


Fig. 4442

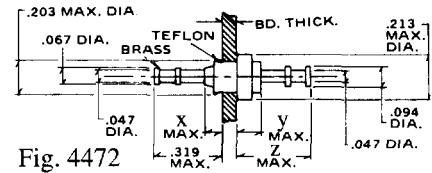


Fig. 4472

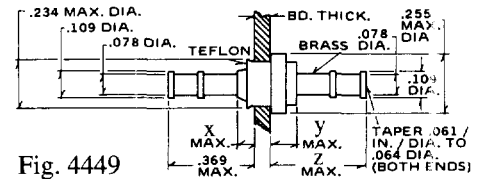


Fig. 4449

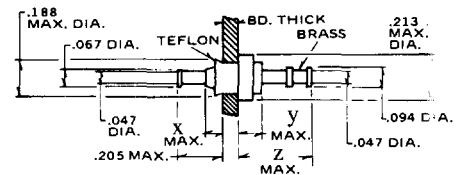


Fig. 4441

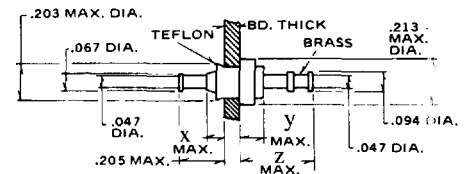


Fig. 4471

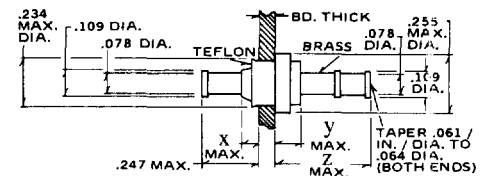


Fig. 4448

Standard Plating Suffix to Part Number

Terminal

-7 (Au over Cu)

See Page 93 for all plating options.

TOLERANCE: .xxx ±.010, .xx ±.016 (ALL DIMS. BEFORE PLATING)